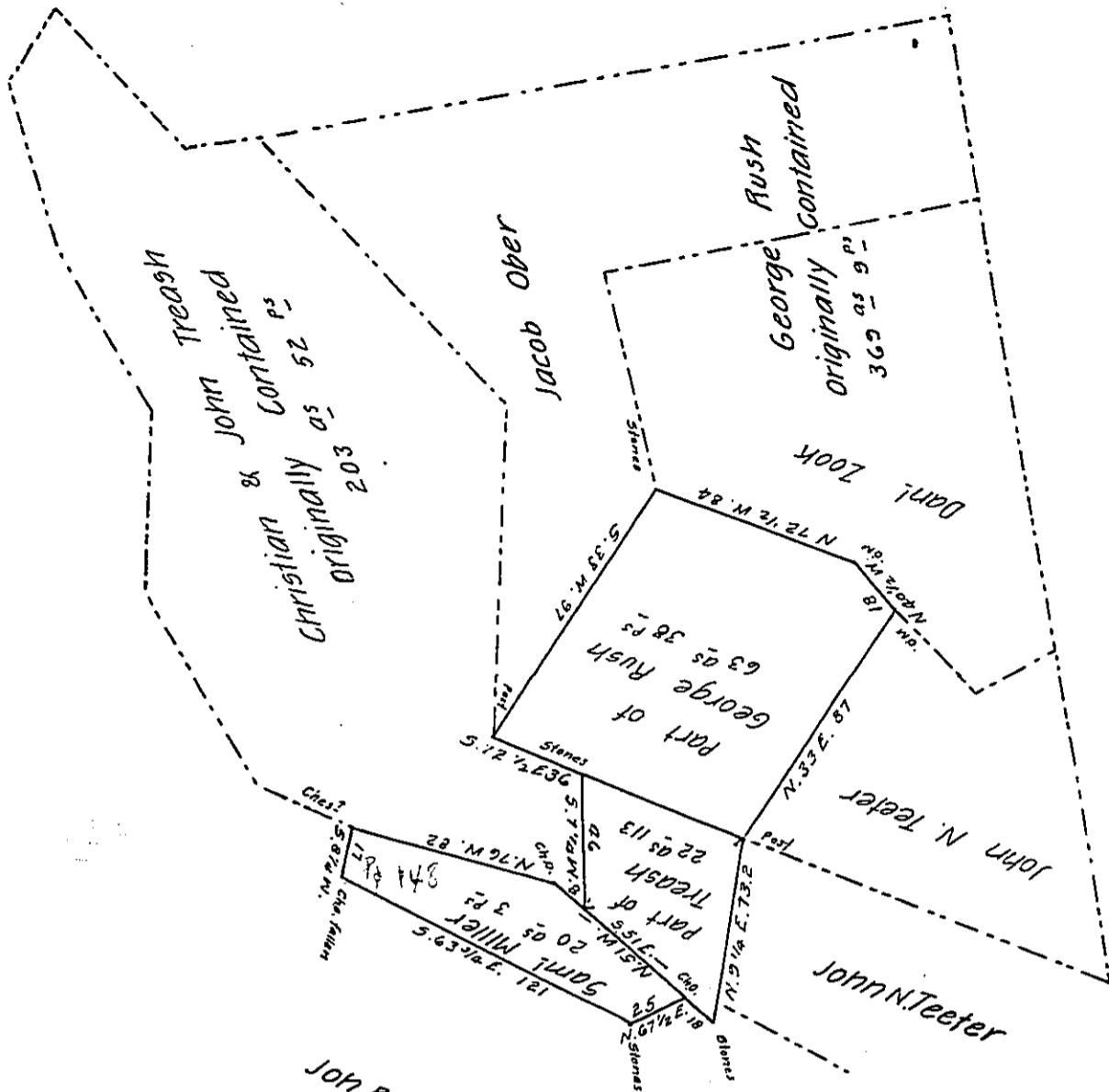


To be Patented to Jacob Guyer



Situate in Woodberry heirs (now South Woodberry) township Bedford, containing 105 acres 154 perches & allowance. Connected & recalculated by David C Long Esq^r the 5th of September 1855 being composed of one whole tract and part of two others, namely; one containing 20 acres 3 perches & c. surveyed on Warrant to Saml Miller dated 29th of Dec^r 1814 one containing 22 acres 113^{ps} & c. being part of a tract that originally contained 203^{acs} 52^{ps} & c. surveyed on Warrant to Christian & John Treash, dated 30th of March 1802 and another containing 63^{acs} 38^{ps} & c., being part of a Tract that originally contained 369^{acs} 9^{ps} & c. surveyed on Warrant to George Rush dated Oct. 25th 1765 1865. Courses changed to the true bearings

Daniel Sams C.S.

To J. Porter Brawley Esq. S.G.

IN TESTIMONY that the above is a copy of the original remaining on file in the Department of Internal Affairs of Pennsylvania, made conformably to an Act of Assembly approved the 16th day of February, 1833, I have hereunto set my Hand and caused the Seal of said Department to be affixed at Harrisburg, this first day of May 1906

Loael S. Brown
Secretary of Internal Affairs.